

Burlington Animal Services

Monthly Statistical Report

December

2016

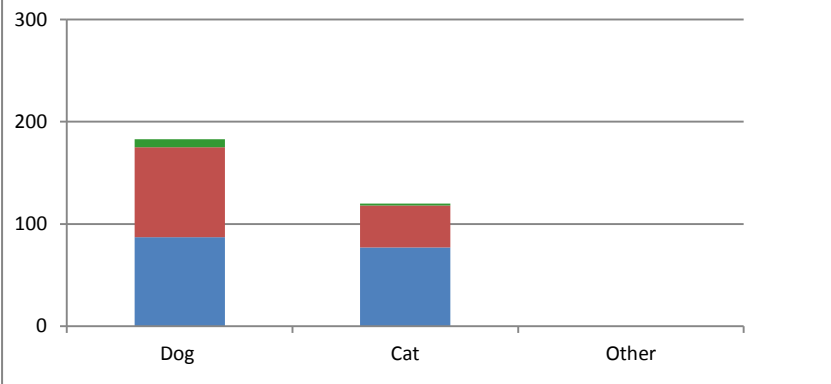
Animal Intakes

Total Intakes

	<u>Dog</u>	<u>Cat</u>	<u>Other</u>	<u>Total</u>
Stray	87	77	0	164
Surrender*	88	41	0	129
Confiscate	8	2	0	10
Total	183	120	0	303

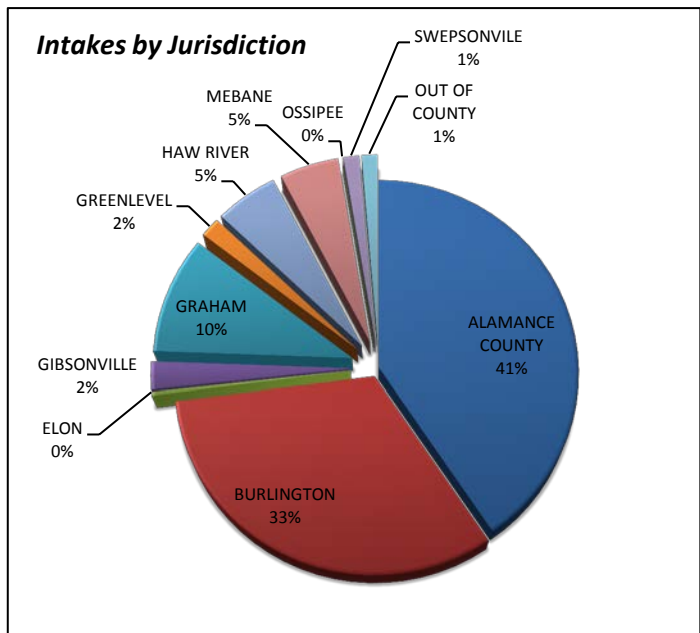
*Surrenders that were adoption returns				
	9	3	0	12

Intake by Type/ Species

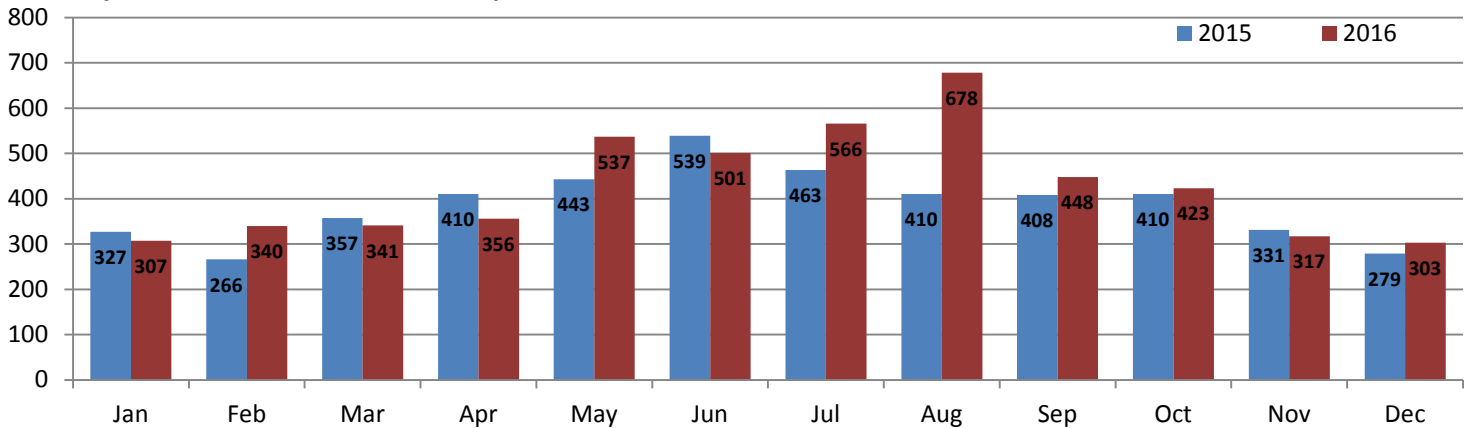


	<u>Total</u>	<u>%</u>	
ALAMANCE COUNTY	123	41%	<i>All jurisdictions verified with Alamance GIS data</i>
BURLINGTON	98	32%	
ELON	1	0%	
GIBSONVILLE	7	2%	
GRAHAM	30	10%	
GREENLEVEL	5	2%	
HAW RIVER	16	5%	
MEBANE	15	5%	
OSSIPEE	0	0%	
SWEPSONVILLE	4	1%	
OUT OF COUNTY	4	1%	
VILLAGE OF ALAMANCE	0	0%	
Total	303	100%	

Intakes by Jurisdiction



Monthly Animal Intake 2015/2016 Comparison



Burlington Animal Services

Monthly Statistical Report

December

2016

Animal Outcomes

Total Outcomes

	<u>Dog</u>	<u>Cat</u>	<u>Other</u>	<u>Total</u>	<u>% of total Dispositions</u>
Return to Owner (RTO)	36	1	0	37	11%
Adoption	94	125	1	220	65%
Rescue Transfer	23	0	1	24	7%
Euthanasia	15	43	0	58	17%
Died	0	2	0	2	0.6%
Total	168	171	2	341	100%

Euthanasia Reasons

	<u>Dog</u>	<u>Cat</u>	<u>Other</u>	<u>Total</u>	<u>%Euth</u>
Behavior		8	7	15	28%
Feral		0	25	25	47%
Medical		7	6	13	25%
Space		0	0	0	0%
Total	15	38	0	53	100%

Owner Requested Euthanasias (included above)	<u>Dog</u>	<u>Cat</u>	<u>Other</u>	<u>Total</u>	<u>%</u>
	4	1	0	5	9%

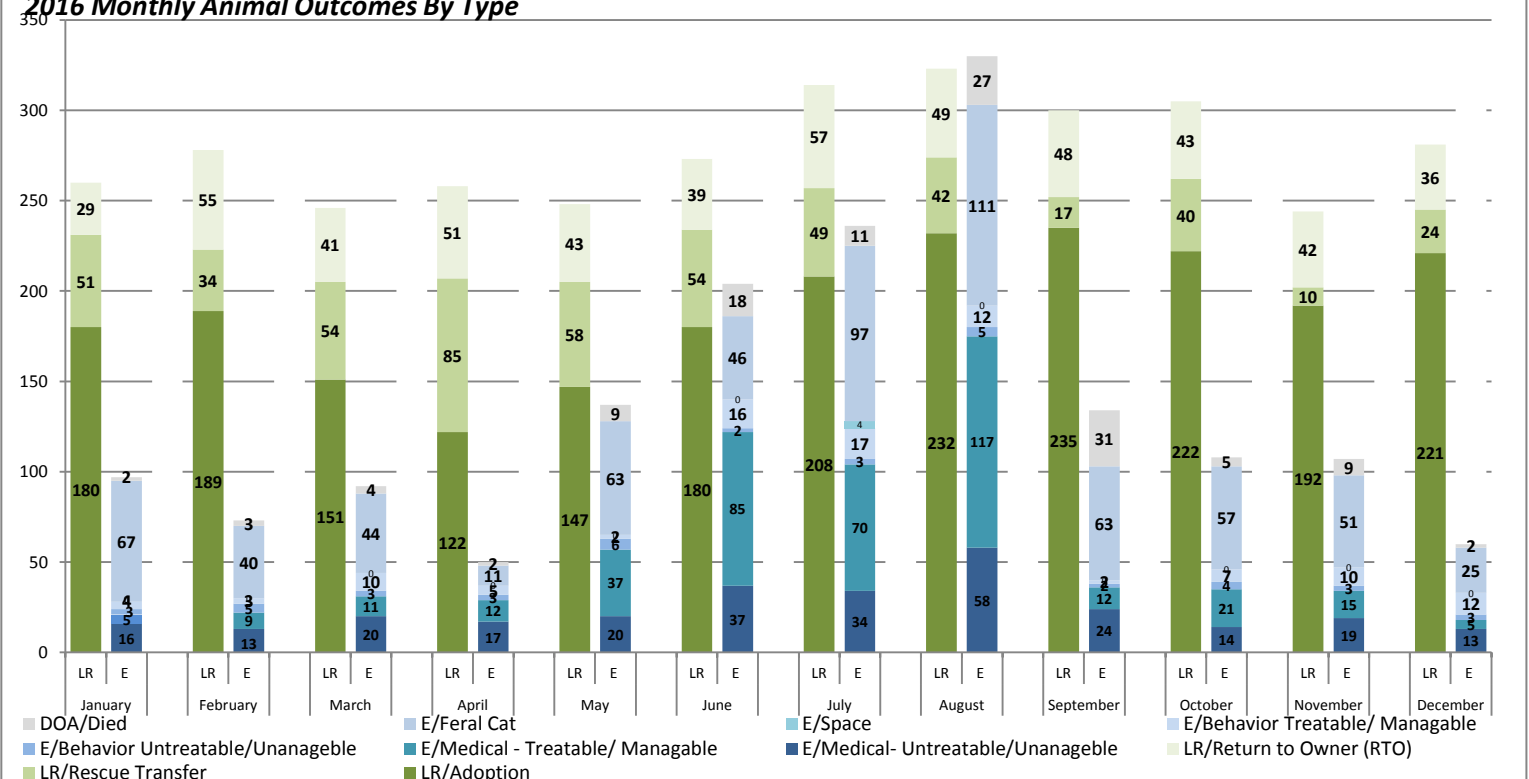
Live Release Outcomes

	<u>Dog</u>	<u>Cat</u>	<u>Other</u>	<u>Total</u>	<u>%</u>
Total Live Release	153	126	2	281	82%
Placeable ⁽¹⁾ Live Release					94%

⁽¹⁾ Placeable Live Release = Number of total dispositions less the number of animals that were not candidates for placement. These include pets with untreatable/unmanageable conditions, surrendered for euthanasia, feral cats that were euthanized and animals that arrive dead or died in custody from the total number of animals dispositioned. For the month of December 2016 this number totals 298

2016 Monthly Animal Outcomes By Type

LR= Live Release E= Euthanized or Died



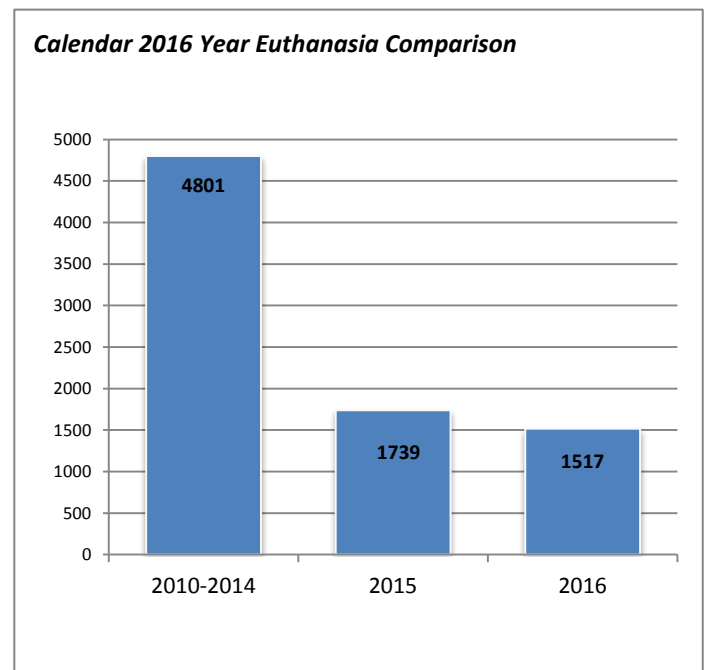
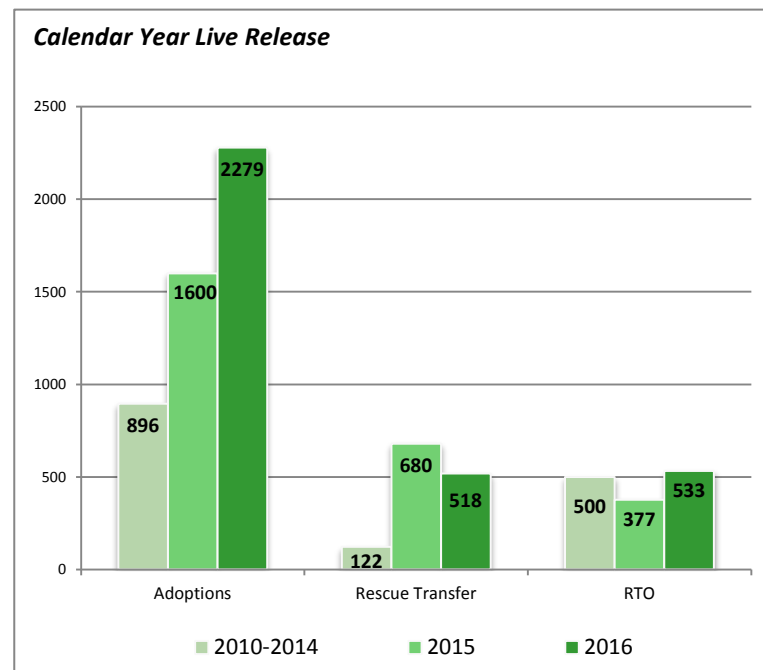
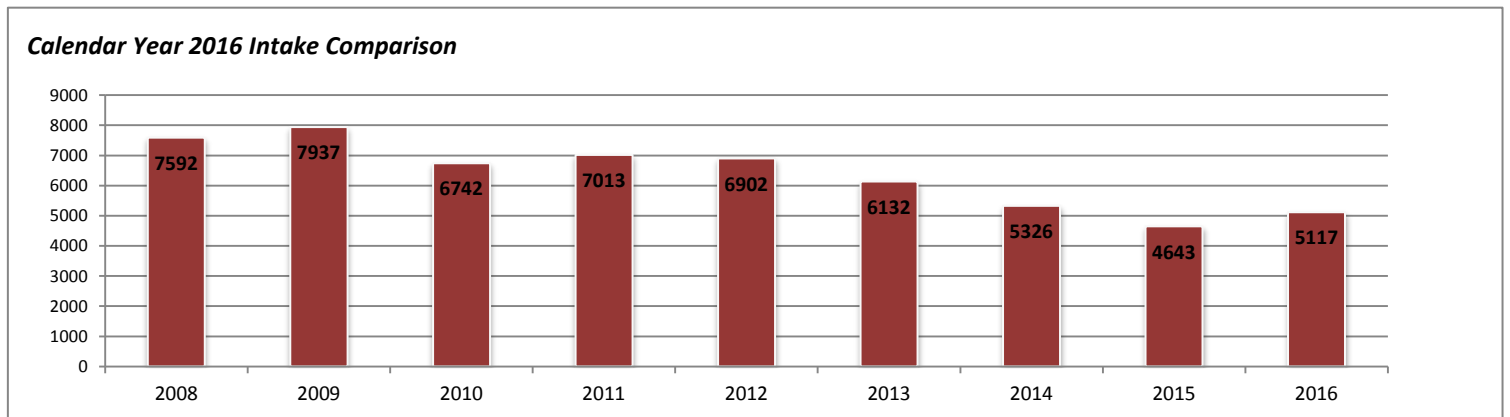
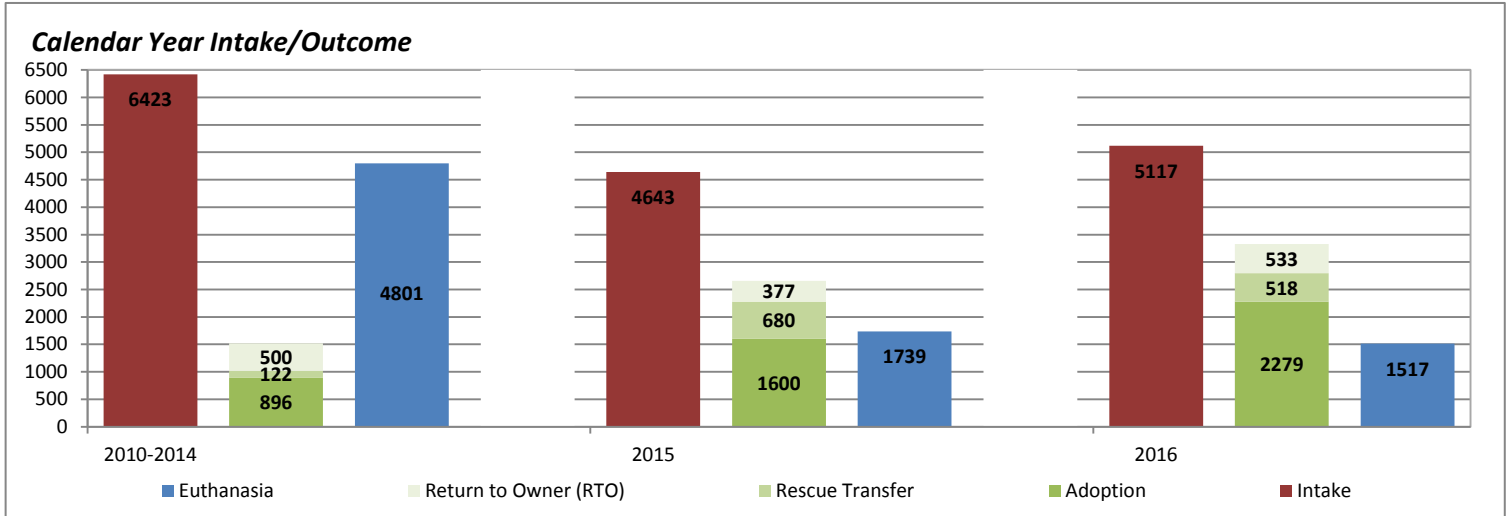
Burlington Animal Services

Monthly Statistical Report

December

Intake/Outcome Comparison Statistics

2016



Burlington Animal Services

Monthly Statistical Report

December

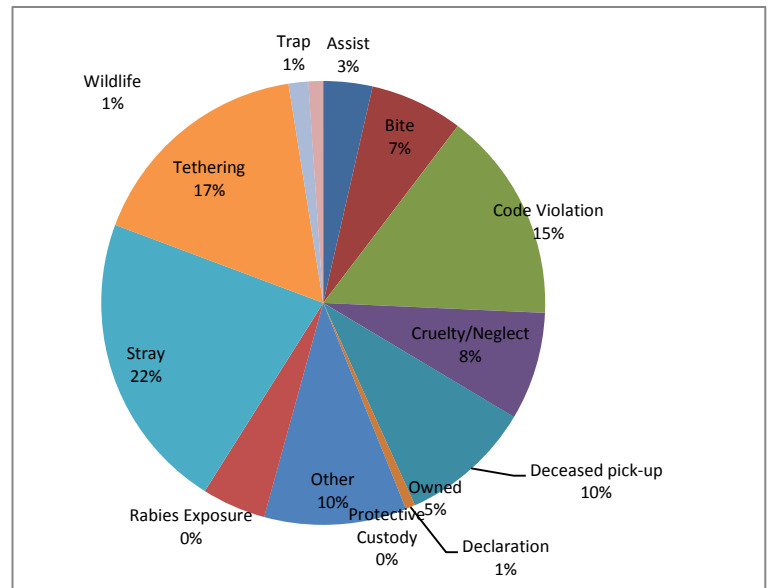
2016

Field Services

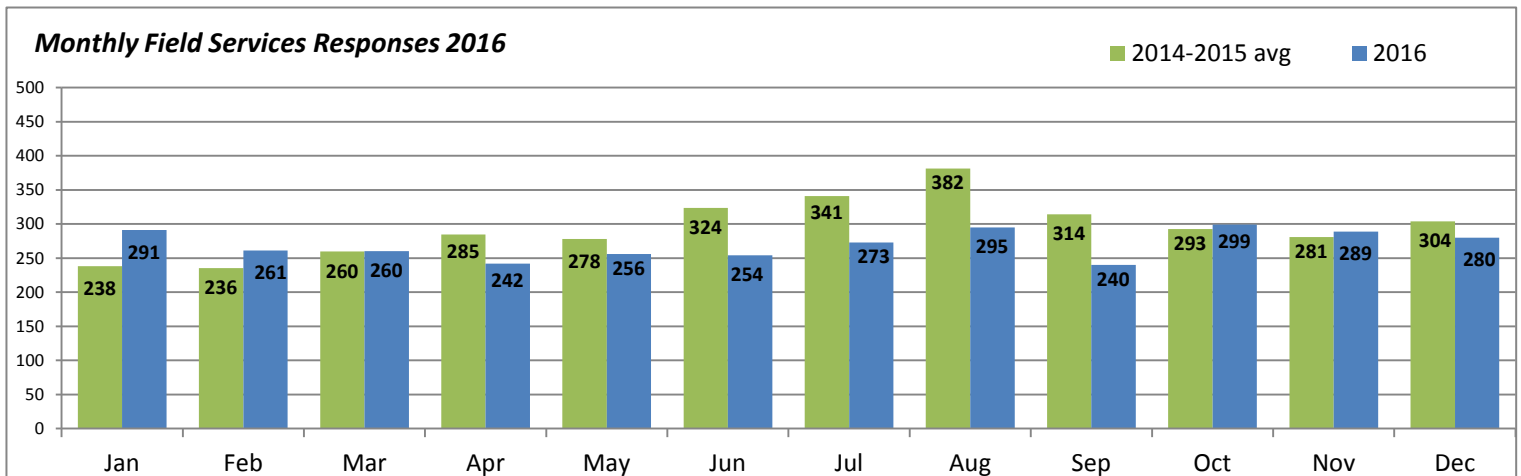
activities related to assisting other agencies such as police or fire, and providing assistance to the public for animal	Assist	10
field activities involving animal bites	Bite	19
field activities related to complaints of code violations involving barking, nuisance, abandoned pets, fowl, over the limit of number of dogs etc	Code Violation	43
field activities involving complaints/ investigations of cruelty and/or neglect	Cruelty/Neglect	22
pick-up and removal of deceased animals	Deceased pick-up	27
(field activities involving § 67-4 and § 130A-200- dangerous and vicious dogs	Declaration	2
field activities not included in the other categories	Other	29
activities related to field pick up of surrendered animals; notice for recovery of owned animal at shelter	Owned	13
field activities involving temporary custody of owned animals	Protective Custody	0
field activities involving potential rabies exposure to human or domestic animal	Rabies Exposure	0
field calls related to domestic animals at large	Stray	61
activities involving complaints related to tethering ordinance	Tethering	47
field activities related to trapping domestic animals	Trap	4
activities related to wildlife	Wildlife	3
	Total	280

Average Field Service Responses per day:

9.0



Monthly Field Services Responses 2016



Burlington Animal Services

Monthly Statistical Report

December

2016

Spay Neuter Clinic

Operations at the Spay & Neuter Clinic transitioned to a new veterinary provider in July upon Dr. Courtney's retirement. The new veterinary contractor team is now in place and responsible for daily operations at the Spay Neuter Clinic. Reports about surgeries performed at the clinic will be provided on a quarterly basis going forward. A new addition to the report this month is the numbers of pets from our county sterilized through the \$20 FIX program for pets of income-qualified families. This important program ensures affordable spay/neuter services are accessible to all of our citizens regardless of income.

