

Burlington Animal Services

Monthly Statistical Report

November 2016

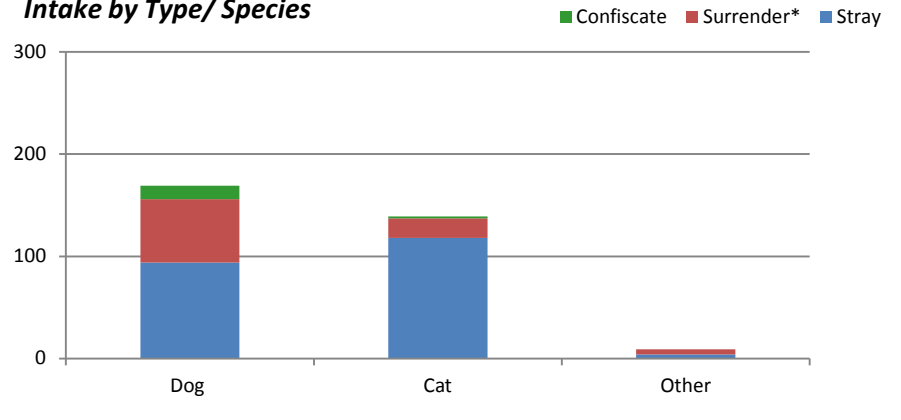
Animal Intakes

Total Intakes

	<u>Dog</u>	<u>Cat</u>	<u>Other</u>	<u>Total</u>
Stray	94	118	4	216
Surrender*	62	19	5	86
Confiscate	13	2	0	15
Total	169	139	9	317

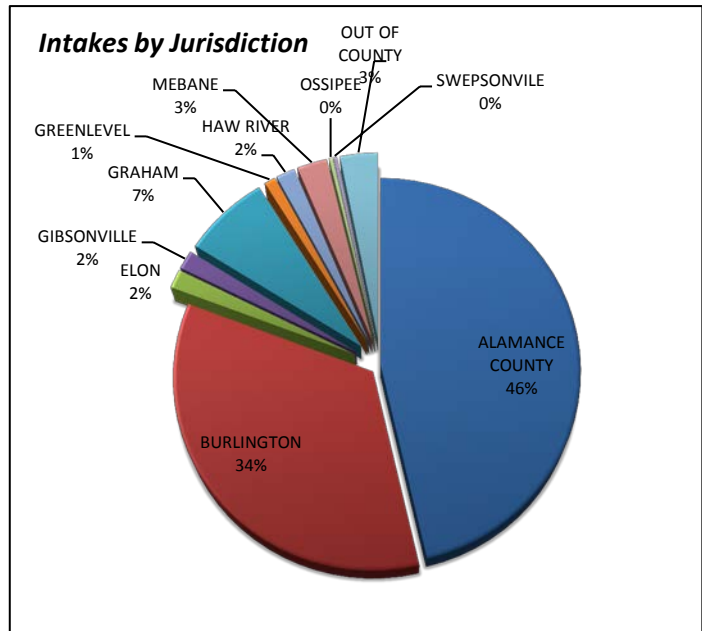
*Surrenders that were adoption returns				
	9	1	0	10

Intake by Type/Species

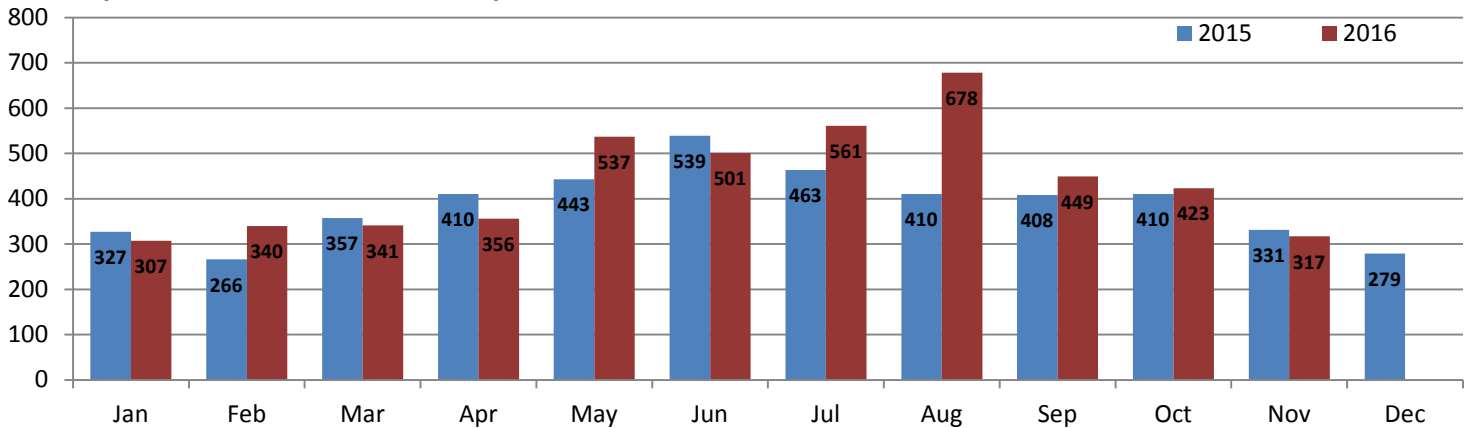


	<u>Total</u>	<u>%</u>	
ALAMANCE COUNTY	147	46%	<i>All jurisdictions verified with Alamance GIS data</i>
BURLINGTON	109	34%	
ELON	5	2%	
GIBSONVILLE	5	2%	
GRAHAM	23	7%	
GREENLEVEL	3	1%	
HAW RIVER	5	2%	
MEBANE	8	3%	
OSSIPEE	1	0%	
SWEPSONVILLE	1	0%	
OUT OF COUNTY	10	3%	
VILLAGE OF ALAMANCE	0	0%	
Total	317	100%	

Intakes by Jurisdiction



Monthly Animal Intake 2015/2016 Comparison



Burlington Animal Services

Monthly Statistical Report

November 2016

Animal Outcomes

Total Outcomes

	<u>Dog</u>	<u>Cat</u>	<u>Other</u>	<u>Total</u>	<u>% of total Dispositions</u>
Return to Owner (RTO)	39	2	1	42	12%
Adoption	108	77	7	192	55%
Rescue Transfer	9	1	0	10	3%
Euthanasia	19	79	0	98	28%
Died	1	8	0	9	2.6%
Total	176	167	8	351	100%

Euthanasia Reasons

	<u>Dog</u>	<u>Cat</u>	<u>Other</u>	<u>Total</u>	<u>%Euth</u>
Behavior		9	4	13	13%
Feral		0	51	51	52%
Medical		10	24	34	35%
Space		0		0	0%
Total	19	79	0	98	100%

Owner Requested Euthanasias (included above)	<u>Dog</u>	<u>Cat</u>	<u>Other</u>	<u>Total</u>	<u>%</u>
	7	0	0	7	7%

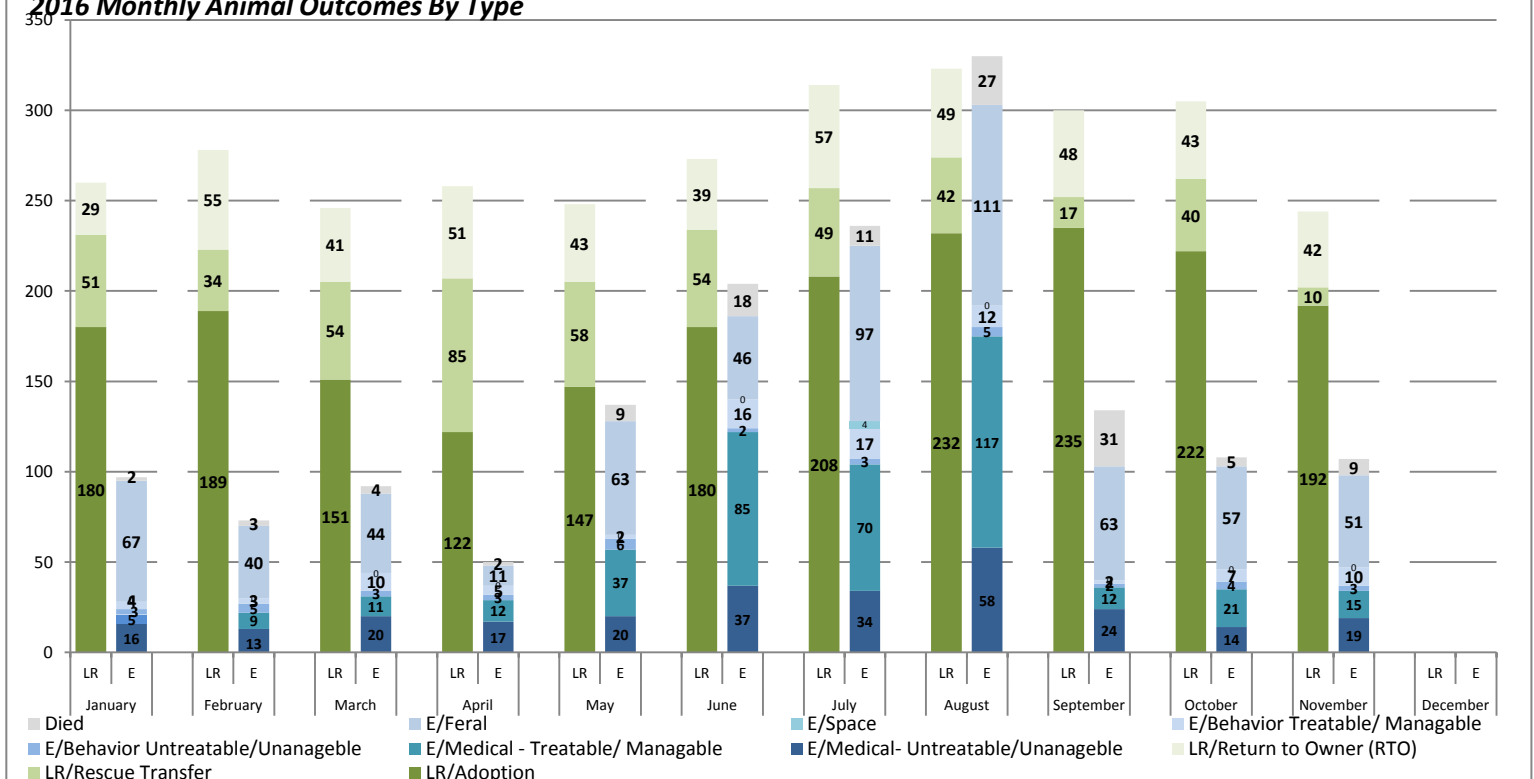
Live Release Outcomes

	<u>Dog</u>	<u>Cat</u>	<u>Other</u>	<u>Total</u>	<u>%</u>
Total Live Release	156	80	8	244	70%
Placeable ⁽¹⁾ Live Release					91%

⁽¹⁾ Placeable Live Release = Number of total dispositions less the number of animals that were not candidates for placement. These include pets with untreatable/unmanageable conditions, surrendered for euthanasia, feral cats that were euthanized and animals that arrive dead or died in custody from the total number of animals dispositioned. For the month of November 2016 this number totals 269

2016 Monthly Animal Outcomes By Type

LR= Live Release E= Euthanized or Died

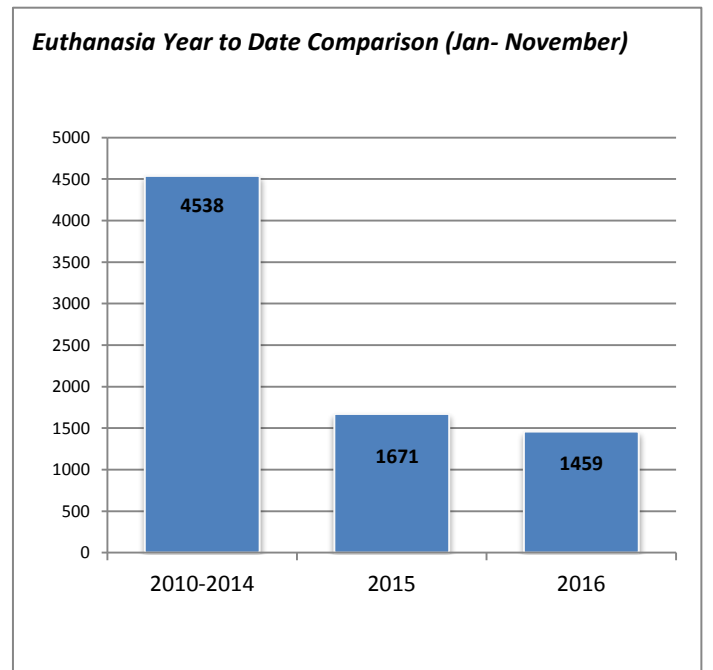
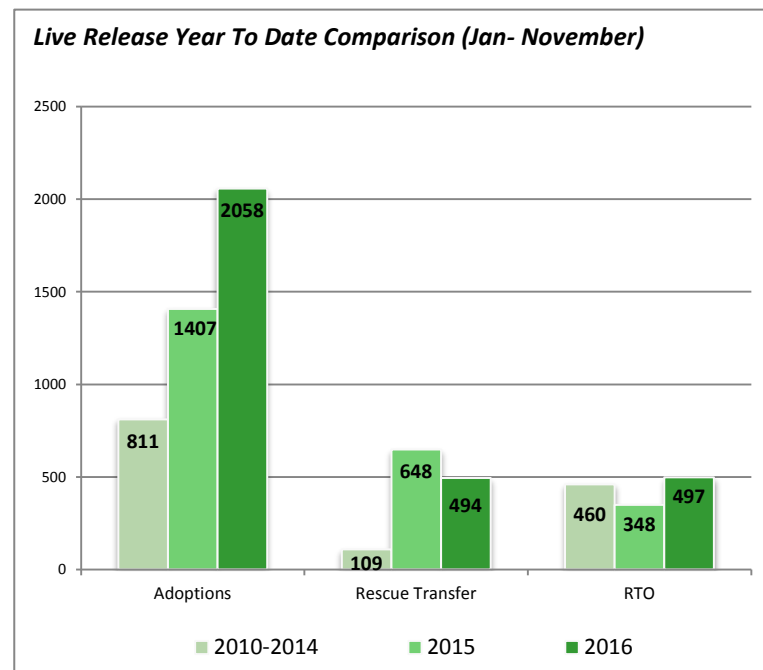
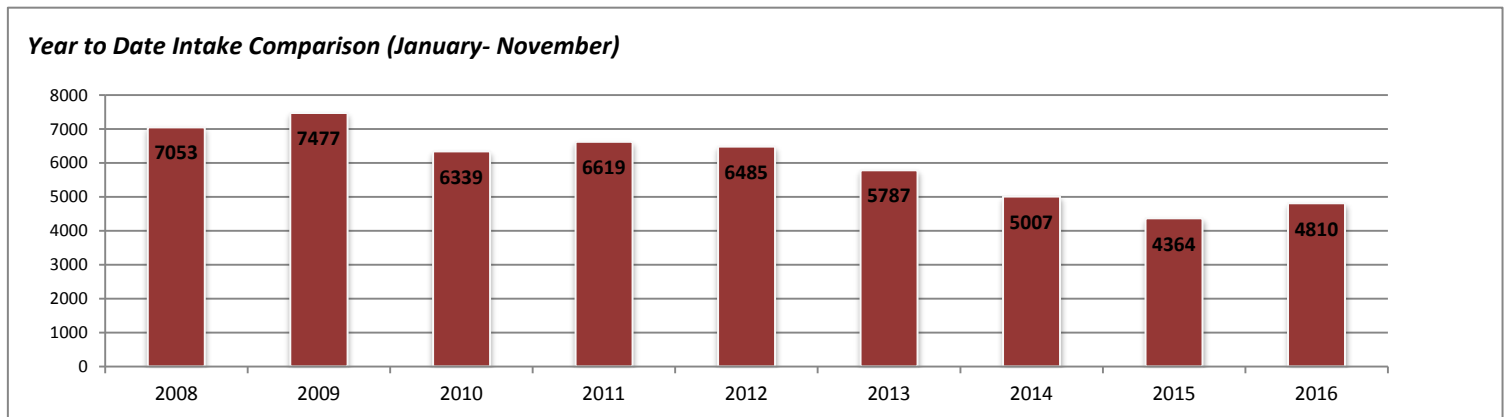
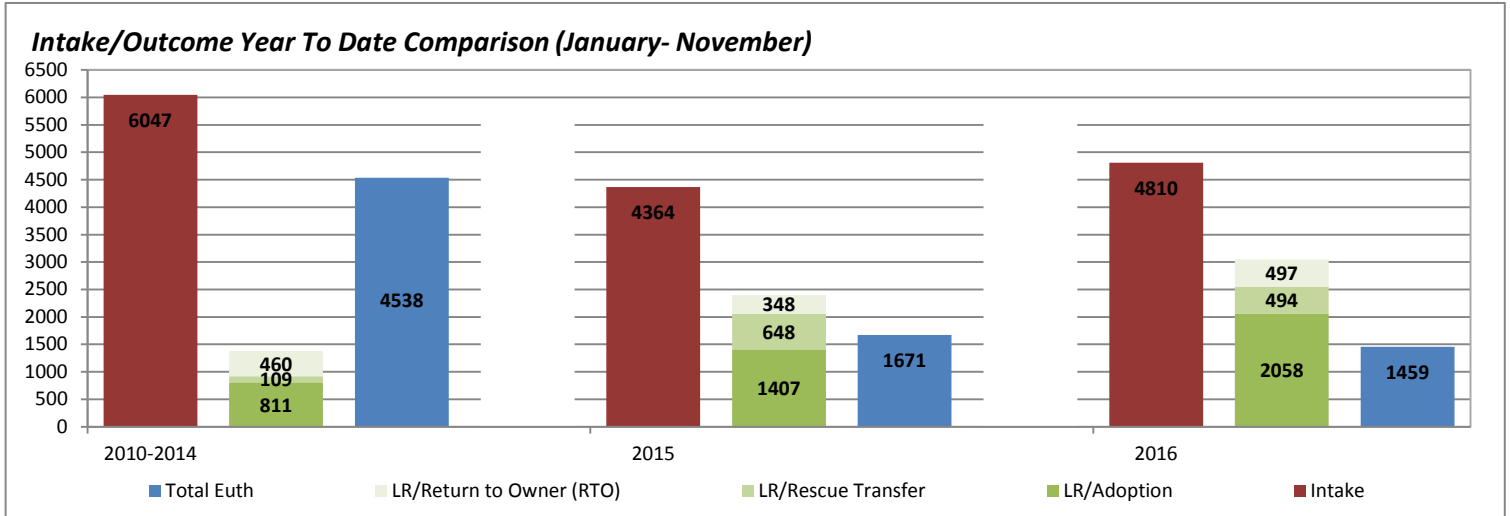


Burlington Animal Services

Monthly Statistical Report

November 2016

Intake/Outcome Comparison Statistics



Burlington Animal Services

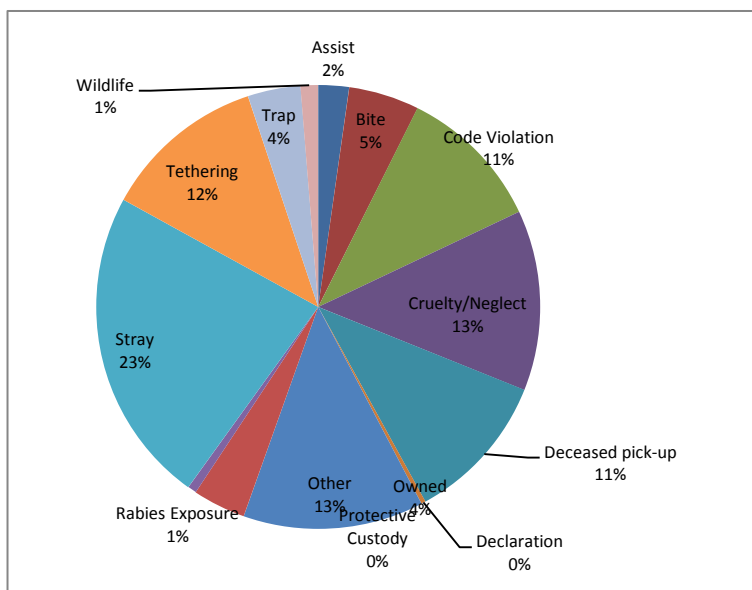
Monthly Statistical Report

November 2016

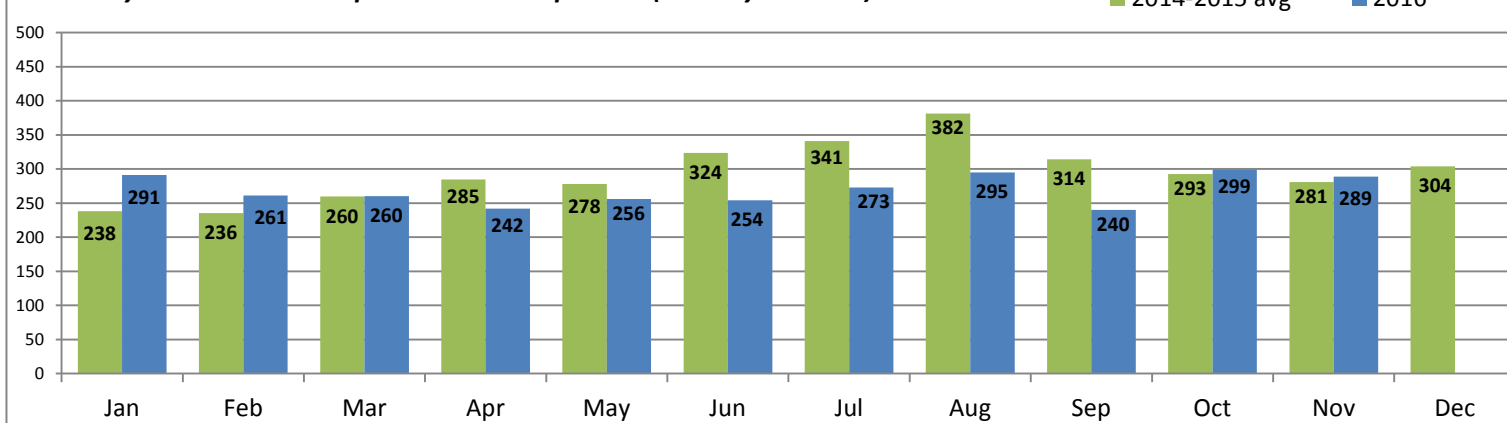
Field Services

activities related to assisting other agencies such as police or fire, and providing assistance to the public for animal	Assist	7
field activities involving animal bites	Bite	16
field activities related to complaints of code violations involving barking, nuisance, abandoned pets, fowl, over the limit of number of dogs etc	Code Violation	33
field activities involving complaints/ investigations of cruelty and/or neglect	Cruelty/Neglect	41
pick-up and removal of deceased animals	Deceased pick-up	34
(field activities involving § 67-4 and § 130A-200- dangerous and vicious dogs	Declaration	1
field activities not included in the other categories	Other	41
activities related to field pick up of surrendered animals; notice for recovery of owned animal at shelter	Owned	12
field activities involving temporary custody of owned animals	Protective Custody	0
field activities involving potential rabies exposure to human or domestic animal	Rabies Exposure	2
field calls related to domestic animals at large	Stray	72
activities involving complaints related to tethering ordinance	Tethering	37
field activities related to trapping domestic animals	Trap	12
activities related to wildlife	Wildlife	4
	Total	289

Average Field Service Responses per day: 9.6



Monthly Field Services Responses YTD Comparison (January-October)



Burlington Animal Services

Monthly Statistical Report

November 2016

Spay Neuter Clinic

Operations at the Spay & Neuter Clinic transitioned to a new veterinary provider in July upon Dr. Courtney's retirement. The new veterinary contractor team is now in place and responsible for daily operations at the Spay Neuter Clinic. Reports about surgeries performed at the clinic will be provided on a quarterly basis going forward. A new addition to the report this month is the numbers of pets from our county sterilized through the \$20 FIX program for pets of income-qualified families. This important program ensures affordable spay/neuter services are accessible to all of our citizens regardless of income.

