

Burlington Animal Services

Monthly Statistical Report

September 2016

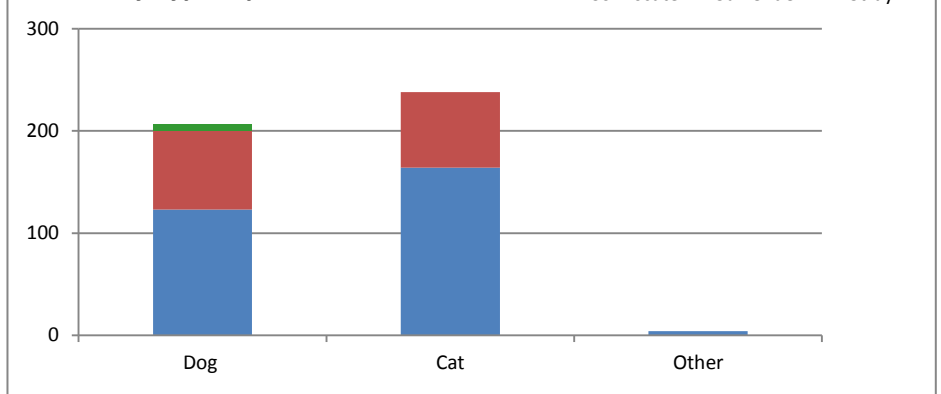
Animal Intakes

Total Intakes

	<i>Doq</i>	<i>Cat</i>	<i>Other</i>	<i>Total</i>
Stray	123	164	4	291
Surrender*	77	74	0	151
Confiscate	6	0	0	6
Total	206	238	4	448

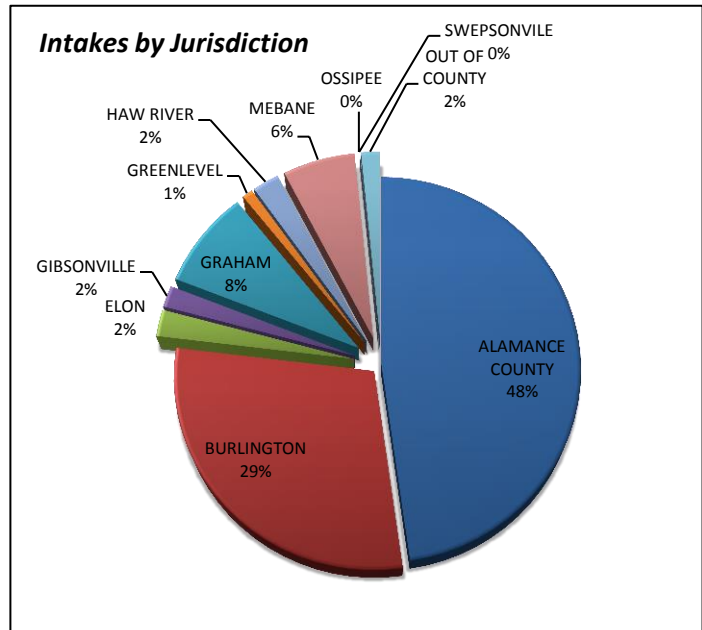
*Surrenders that were adoption returns				
	6	3	0	9

Intake by Type/ Species

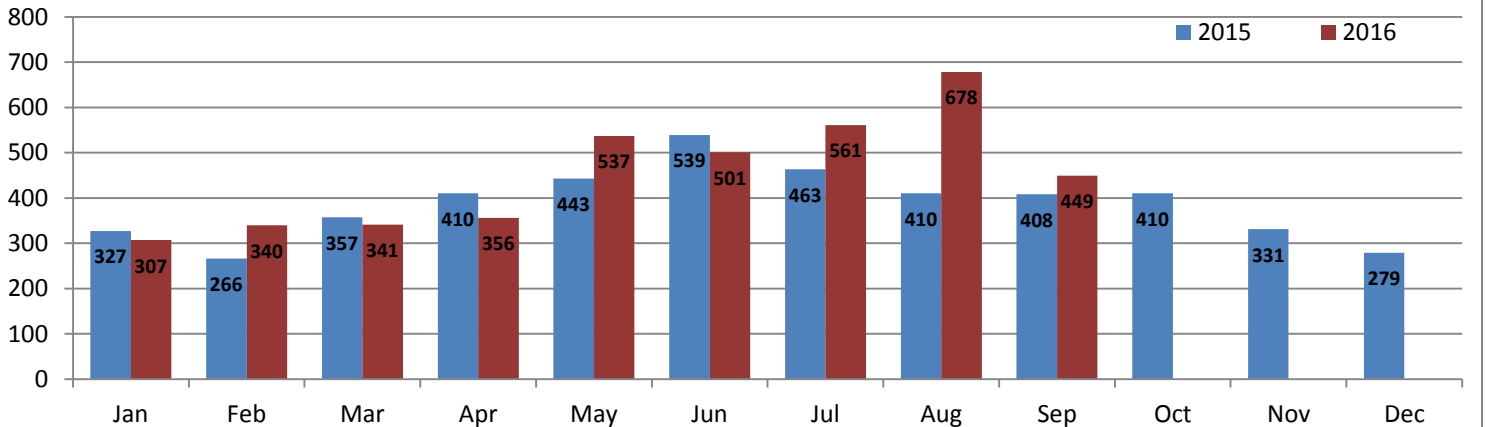


	<i>Total</i>	<i>%</i>	
ALAMANCE COUNTY	213	48%	<i>All jurisdictions verified with Alamance GIS data</i>
BURLINGTON	130	29%	
ELON	10	2%	
GIBSONVILLE	8	2%	
GRAHAM	37	8%	
GREENLEVEL	4	1%	
HAW RIVER	10	2%	
MEBANE	27	6%	
OSSIPEE	0	0%	
SWEPSONVILLE	0	0%	
OUT OF COUNTY	7	2%	
VILLAGE OF ALAMANCE	2	0%	
Total	448	100%	

Intakes by Jurisdiction



Monthly Animal Intake 2015/2016 Comparison



Burlington Animal Services

Monthly Statistical Report

September 2016

Animal Outcomes

Total Outcomes

	<u>Dog</u>	<u>Cat</u>	<u>Other</u>	<u>Total</u>	<u>% of total Dispositions</u>
Return to Owner (RTO)	46	2	0	48	11%
Adoption	134	101	0	235	54%
Rescue Transfer	17	0	0	17	4%
Euthanasia	11	92	0	103	24%
Died	1	30	0	31	7.1%
Total	209	225	0	434	100%

Euthanasia Reasons

	<u>Dog</u>	<u>Cat</u>	<u>Other</u>	<u>Total</u>	<u>%Euth</u>
Behavior		3	1	4	4%
Feral		0	63	63	61%
Medical		8	28	36	35%
Space		0	0	0	0%
Total	11	92	0	103	100%

Owner Requested Euthanasias (included above)	<u>Dog</u>	<u>Cat</u>	<u>Other</u>	<u>Total</u>	<u>%Euth</u>
	10	4	0	14	14%

Live Release Outcomes

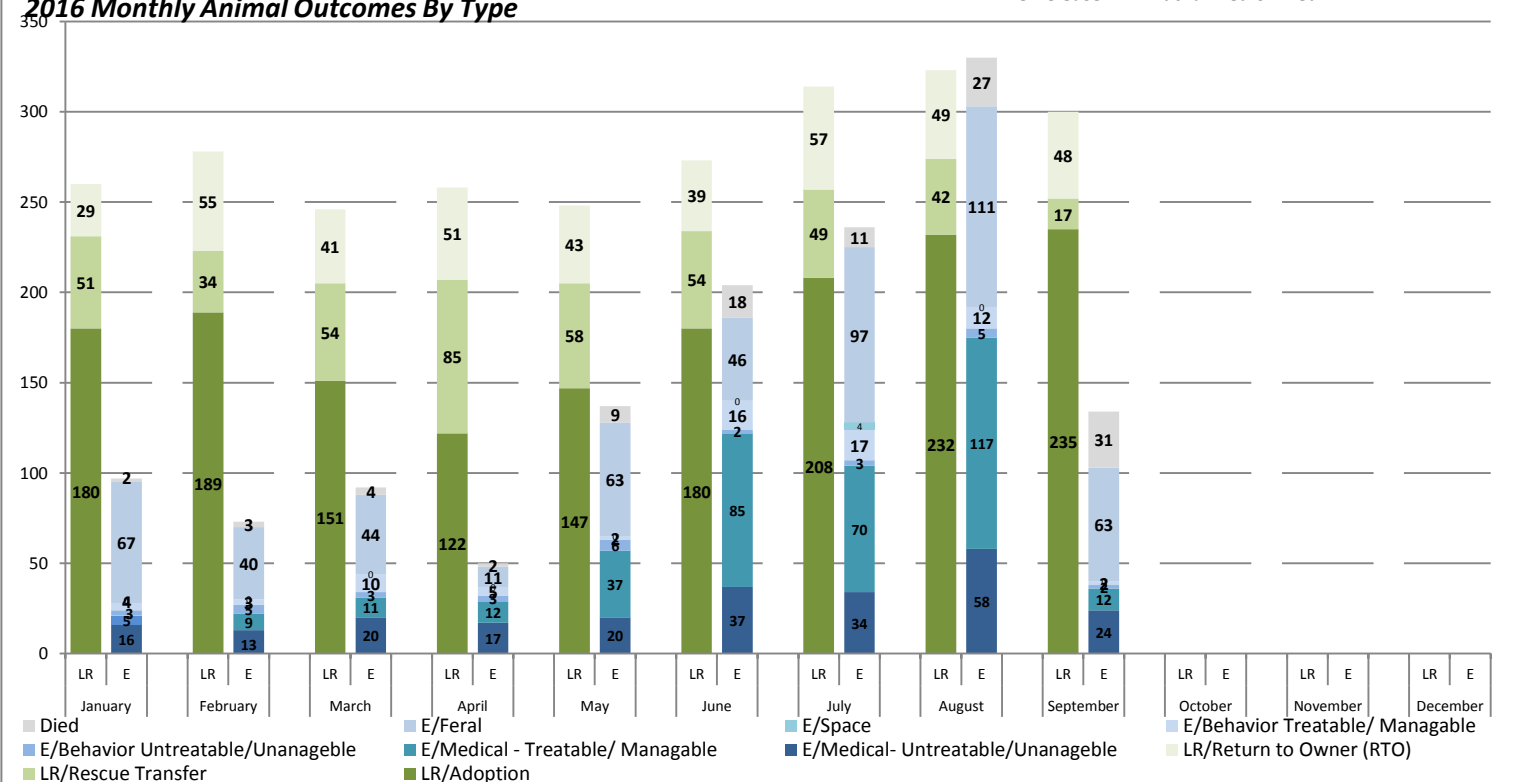
	<u>Dog</u>	<u>Cat</u>	<u>Other</u>	<u>Total</u>	<u>%</u>
Total Live Release	197	103	0	300	69%

Placeable ⁽¹⁾ Live Release 96%

⁽¹⁾ Placeable Live Release = Number of total dispositions less the number of animals that were not candidates for placement. These include pets with untreatable/unmanageable conditions, surrendered for euthanasia, feral cats that were euthanized and animals that arrive dead or died in custody from the total number of animals dispositioned. For the month of September 2016 this number totals 314

2016 Monthly Animal Outcomes By Type

LR= Live Release E= Euthanized or Died

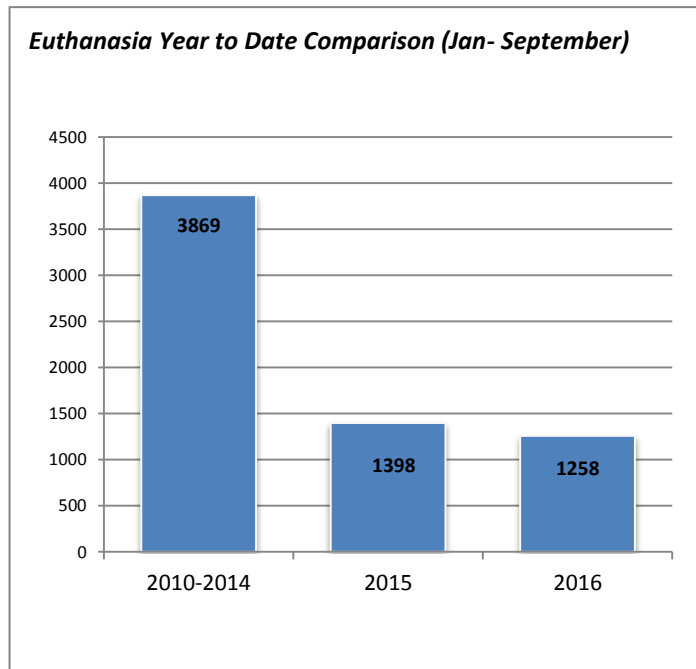
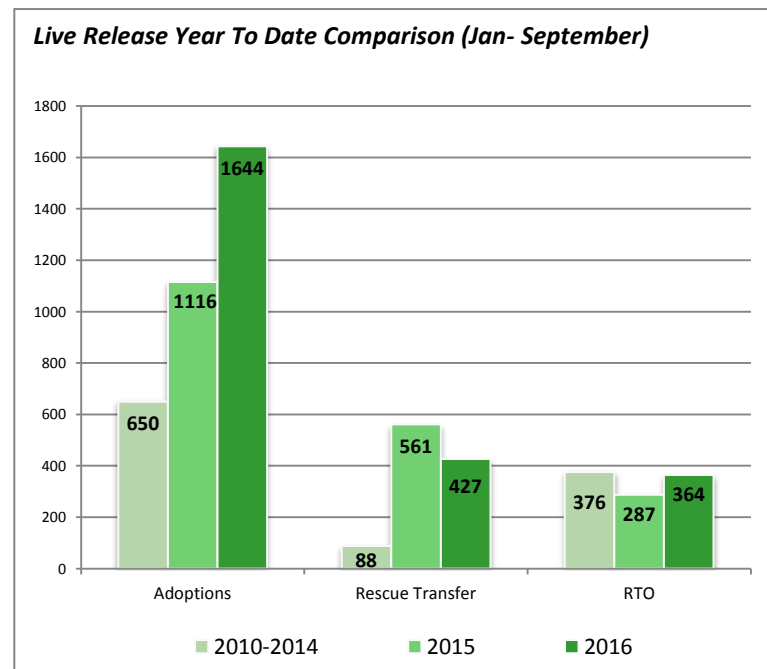
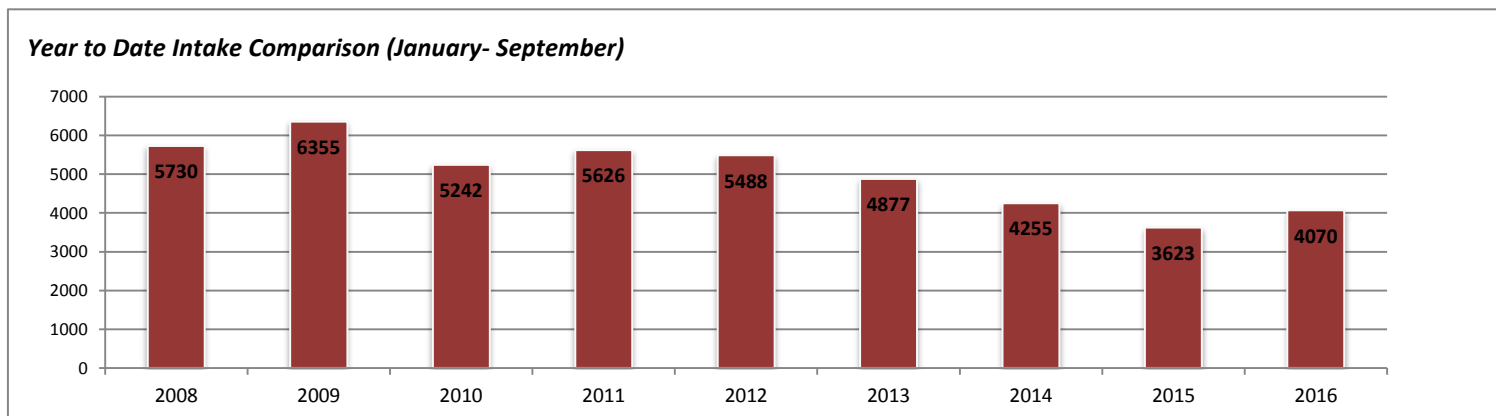
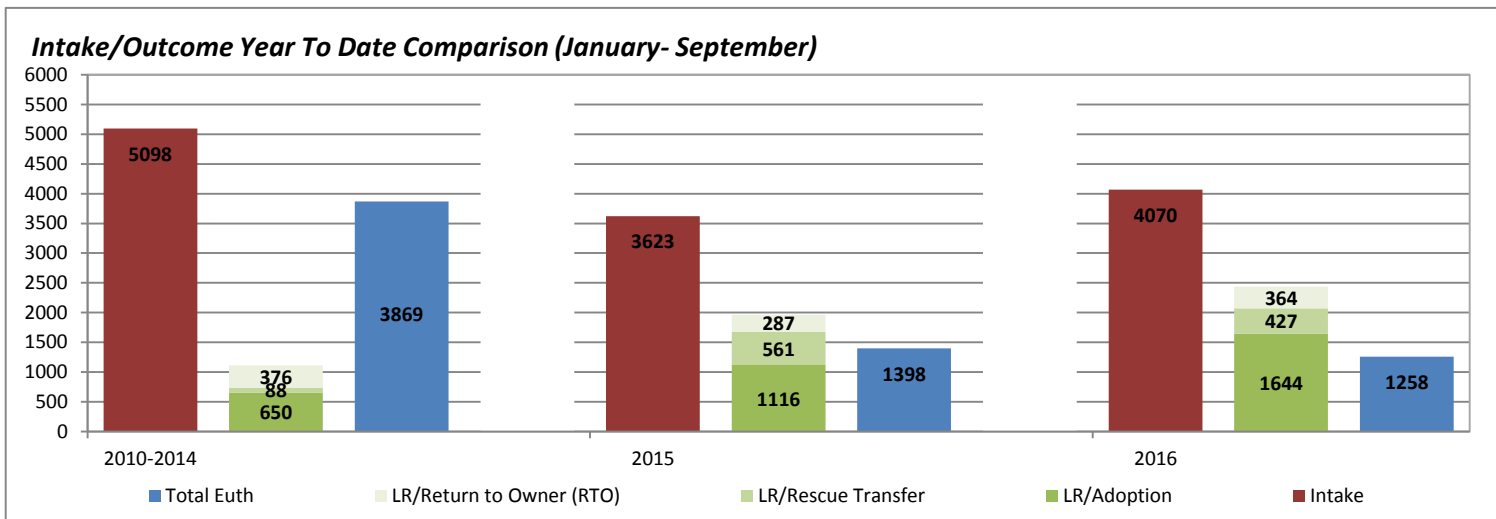


Burlington Animal Services

Monthly Statistical Report

September 2016

Intake/Outcome Comparison Statistics



Burlington Animal Services

Monthly Statistical Report

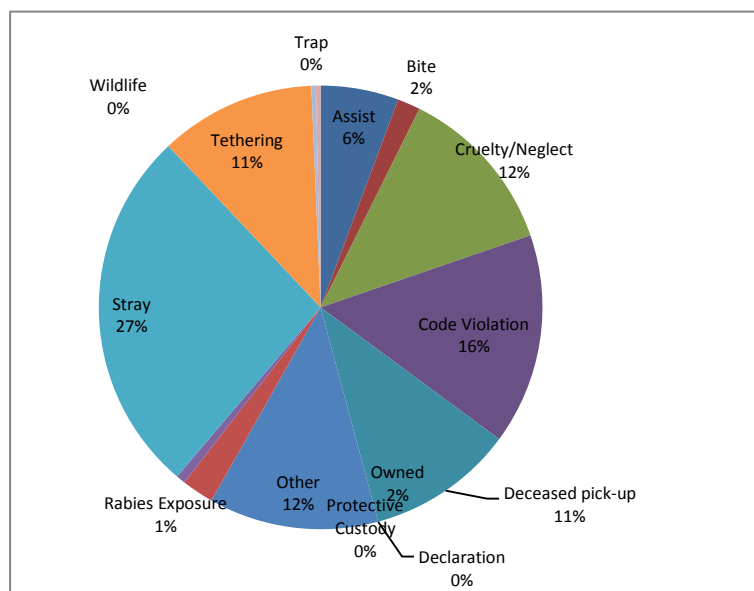
September 2016

Field Services

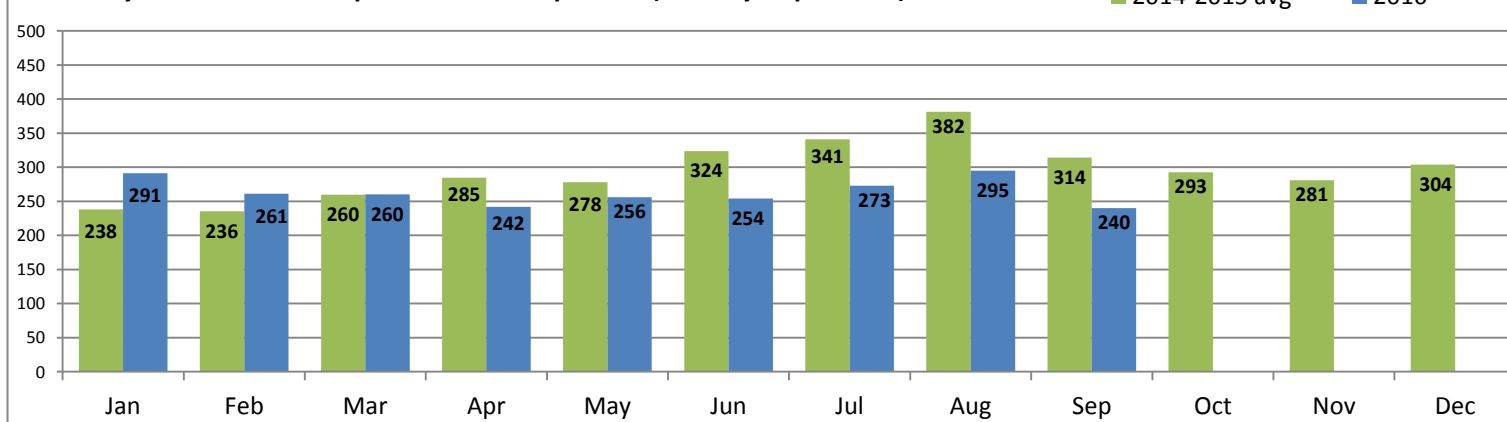
activities related to assisting other agencies such as police or fire, and providing assistance to the public for animal	Assist	17
field activities involving animal bites	Bite	5
field activities involving complaints/ investigations of cruelty and/or neglect	Cruelty/Neglect	37
field activities related to complaints of code violations involving barking, nuisance, abandoned pets, fowl, over the limit of number of dogs etc	Code Violation	46
pick-up and removal of deceased animals	Deceased pick-up	32
(field activities involving § 67-4 and § 130A-200- dangerous and vicious dogs	Declaration	0
field activities not included in the other categories	Other	37
activities related to field pick up of surrendered animals; notice for recovery of owned animal at shelter	Owned	7
field activities involving temporary custody of owned animals	Protective Custody	0
field activities involving potential rabies exposure to human or domestic animal	Rabies Exposure	2
field calls related to domestic animals at large	Stray	80
activities involving complaints related to tethering ordinance	Tethering	34
field activities related to trapping domestic animals	Trap	1
activities related to wildlife	Wildlife	1
	Total	240

Average Field Service Responses per day:

8.0



Monthly Field Services Responses YTD Comparison (January-September)



Burlington Animal Services

Monthly Statistical Report

September 2016

Spay Neuter Clinic

Operations at the Spay & Neuter Clinic transitioned to a new veterinary provider in July upon Dr. Courtney's retirement. The new veterinary contractor team is now in place and responsible for daily operations at the Spay Neuter Clinic. Reports about surgeries performed at the clinic will be provided on a quarterly basis going forward. A new addition to the report this month is the numbers of pets from our county sterilized through the \$20 FIX program for pets of income-qualified families. This important program ensures affordable spay/neuter services are accessible to all of our citizens regardless of income.

